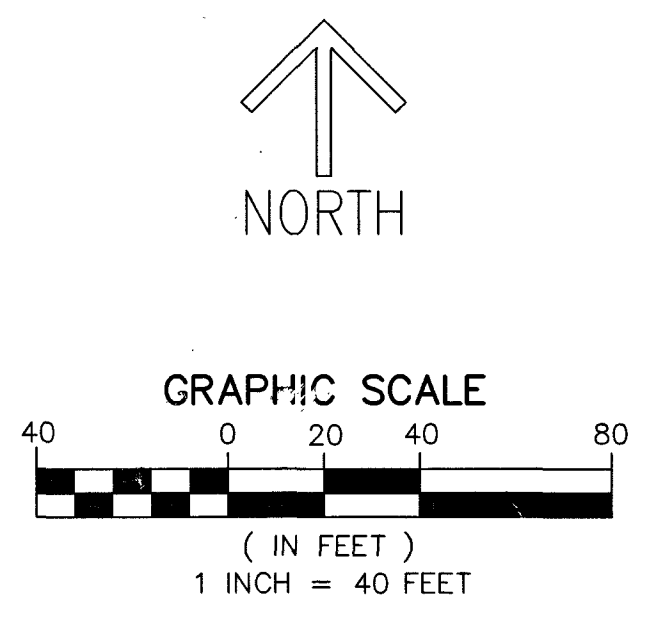
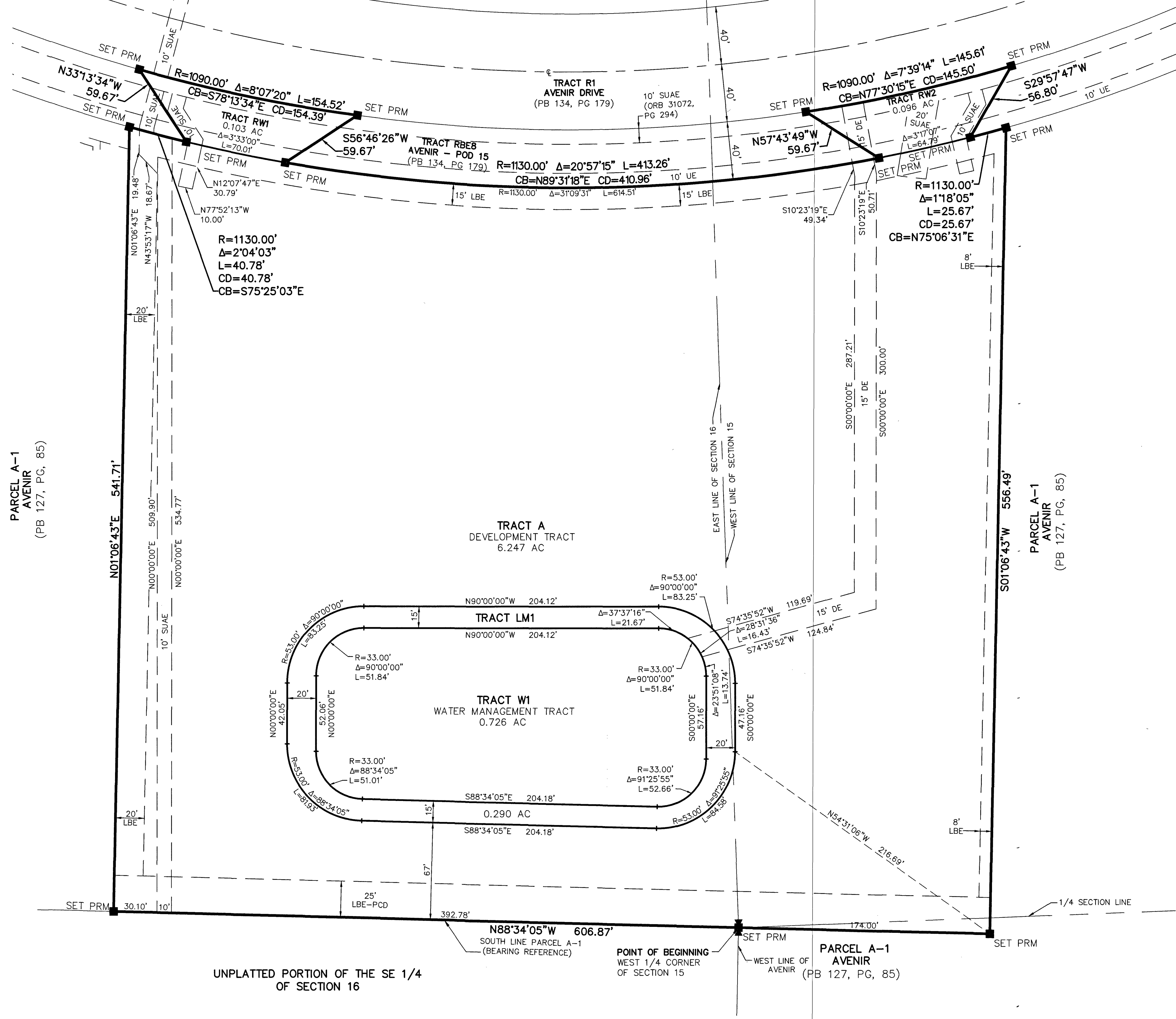
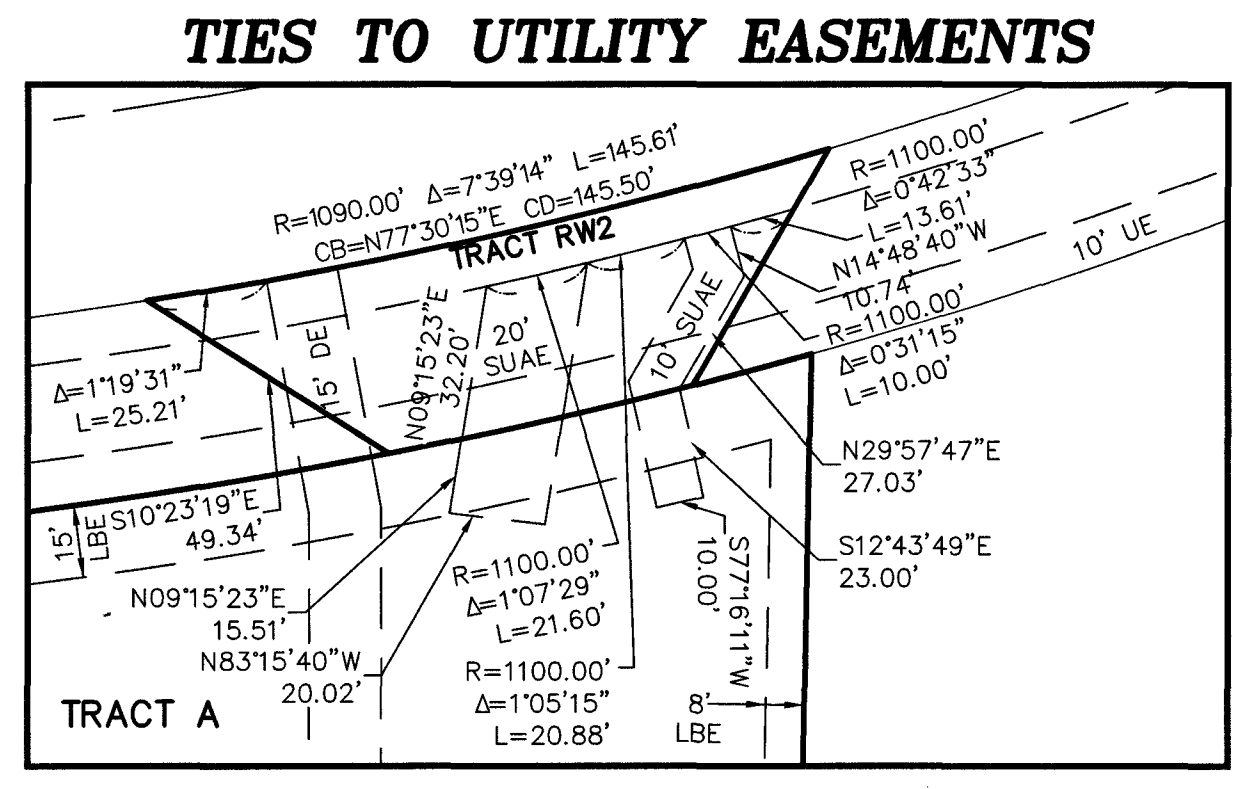
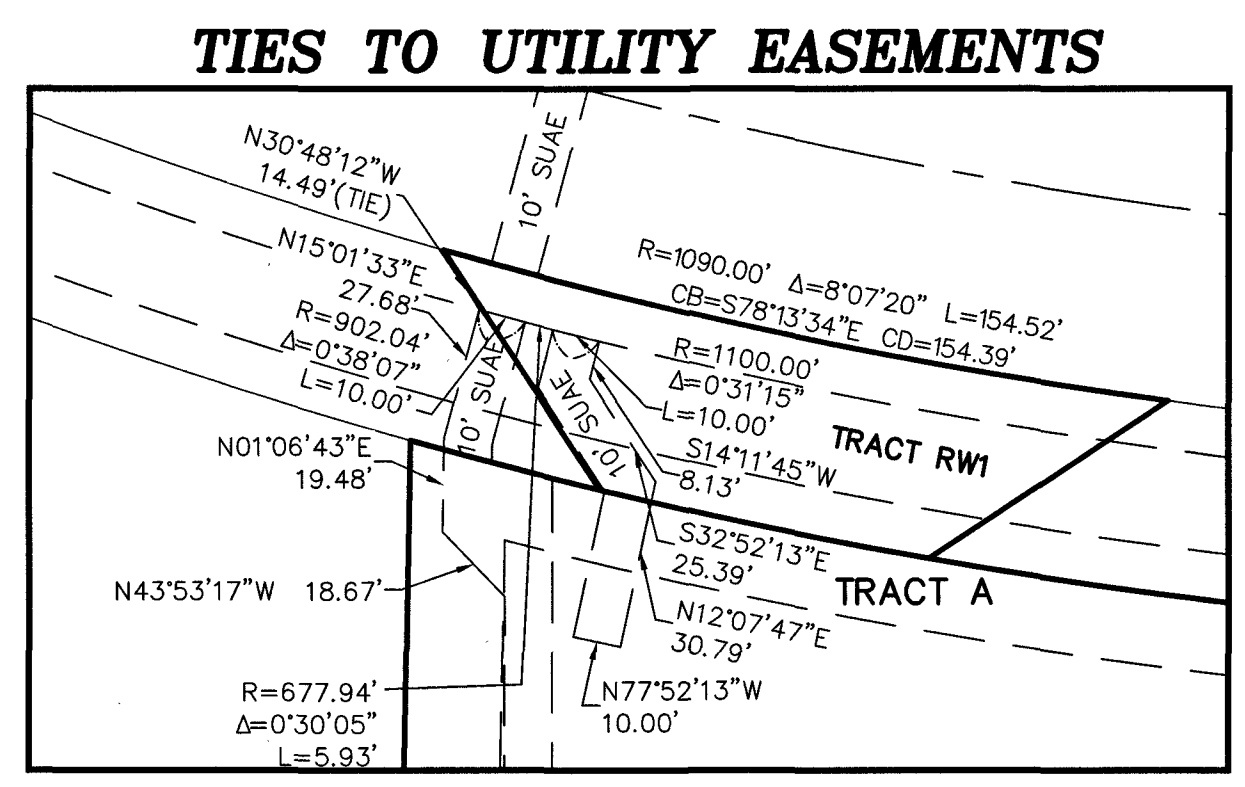


AVENIR - CHARTER SCHOOL

BEING A REPLAT OF A PORTION OF PARCEL A-1, AVENIR, AS RECORDED IN PLAT BOOK 127 PAGE 85, TOGETHER WITH A PORTION OF TRACT RBE8, AVENIR - POD 15, AS RECORDED IN PLAT BOOK 134 PAGE 179, OF THE PUBLIC RECORDS OF PALM BEACH COUNTY, FLORIDA LYING IN SECTIONS 15 AND 16, TOWNSHIP 42 SOUTH, RANGE 41 EAST, CITY OF PALM BEACH GARDENS, PALM BEACH COUNTY, FLORIDA.

THIS INSTRUMENT PREPARED BY
RONNIE L. FURNISS
OF
CAULFIELD and WHEELER, INC.
SURVEYORS - ENGINEERS - PLANNERS
7900 GLADES ROAD, SUITE 100
BOCA RATON, FLORIDA 33434 - (561)392-1991
CERTIFICATE OF AUTHORIZATION NO. LB3591
JULY 2024



- LEGEND/ABBREVIATIONS**
- CL - CENTERLINE
 - Δ - DELTA (CENTRAL ANGLE)
 - AC - ACRES
 - CB - CHORD BEARING
 - CD - CHORD DISTANCE
 - DE - DRAINAGE EASEMENT
 - L - ARC LENGTH
 - LB - LICENSED BUSINESS
 - LBE - LANDSCAPE BUFFER EASEMENT
 - O.R.B. - OFFICIAL RECORD BOOK
 - PB - PLAT BOOK
 - PCD - PLANNED COMMUNITY DEVELOPMENT
 - PG - PAGE
 - R - RADIUS
 - (R) - INDICATES RADIAL LINE
 - RB - INDICATES RADIAL BEARING
 - RBE - ROADWAY BUFFER EASEMENT
 - SF - SQUARE FEET
 - SUAE - SEACOAST UTILITY AUTHORITY EASEMENT
 - UE - UTILITY EASEMENT
 - PRM - DENOTES PERMANENT REFERENCE MONUMENT
5/8" IRON ROD WITH CAP STAMPED
C&W PRM LB 3591
 - - DENOTES PERMANENT CONTROL POINT
 - ✱ - 1/4 SECTION CORNER
 - ✱ - SECTION CORNER

UNPLATTED PORTION OF THE SE 1/4 OF SECTION 16

POINT OF BEGINNING WEST 1/4 CORNER OF SECTION 15

PARCEL A-1 AVENIR (PB 127, PG. 85)

PARCEL A-1 AVENIR (PB 127, PG. 85)

PARCEL A-1 AVENIR (PB 127, PG. 85)